

Intrastromal corneal ring segments

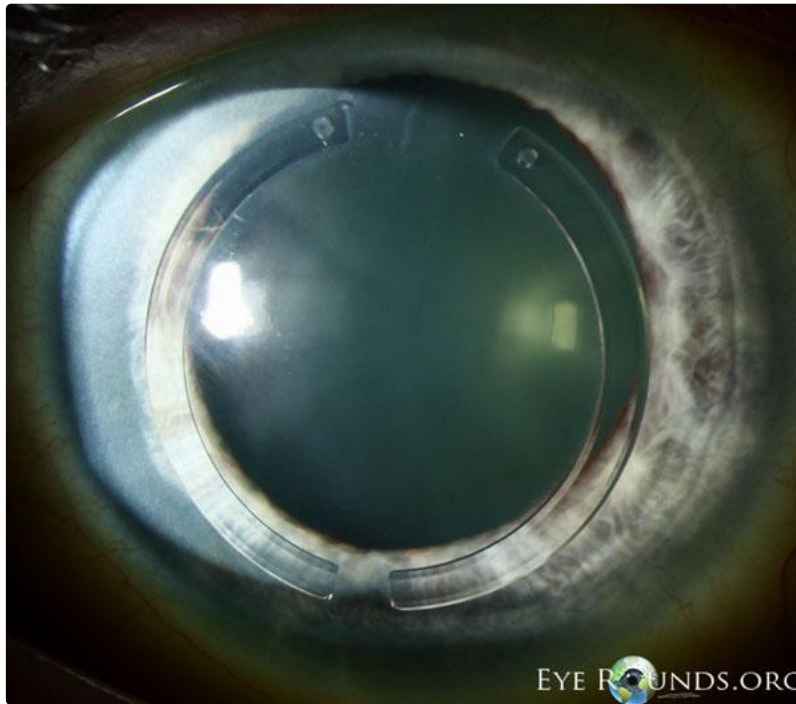
Category(ies): Cornea

Contributor: [Christopher Kirkpatrick, MD](#), [Anna Kitzmann, MD](#)

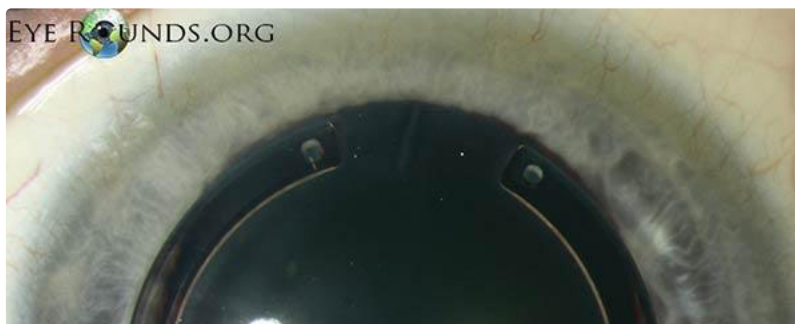
Photographer: Toni Venckus

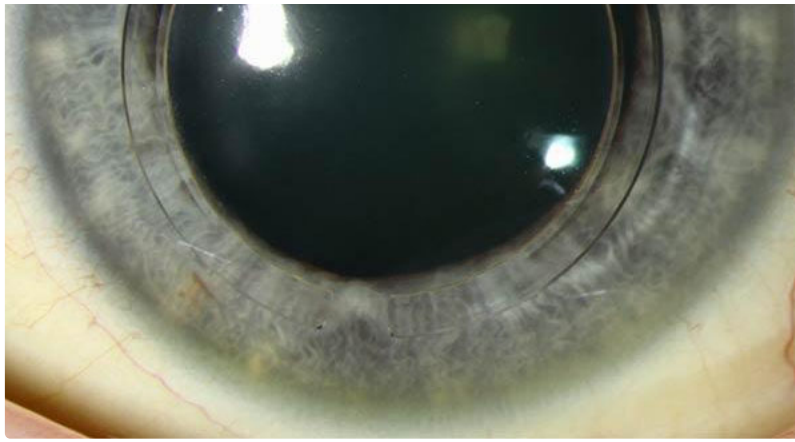


These crescentic/semi-circular shaped ring segments are implanted into the midperipheral corneal stroma for the purpose of refractive error correction or management of keratoconus. In the era of improved laser refractive surgery techniques, these implants are no longer commonly used for refractive correction, but indications include correction of mild to moderate myopia by mechanism of flattening the central cornea by varying degrees depending on the size/thickness of ring segment implanted. These removable rings are implanted into the corneal stromal tunnel created by mechanical or femtosecond laser techniques.



[Enlarge](#) [Download](#)





[Enlarge](#) [Download](#)

References:

- 1.
- 2.

Image Permissions:



Ophthalmic Atlas Images by [EyeRounds.org](#), [The University of Iowa](#) are licensed under a [Creative Commons Attribution-NonCommercial-NoDerivs 3.0 Unported License](#).

Address

University of Iowa
Roy J. and Lucille A. Carver College
of Medicine
Department of Ophthalmology and
Visual Sciences
200 Hawkins Drive
Iowa City, IA 52242

Support Us

Legal

Copyright © 2019 The University of
Iowa. All Rights Reserved
[Report an issue with this page](#)
[Web Privacy Policy](#) |
[Nondiscrimination Statement](#)

Related Links

[Cataract Surgery for Greenhorns](#)
[EyeTransillumination](#)
[Gonioscopy.org](#)
[Iowa Glaucoma Curriculum](#)
[Iowa Wet Lab](#)
[Patient Information](#)
[Stone Rounds](#)
[The Best Hits Bookshelf](#)

EyeRounds Social Media

Follow



Receive notification of new cases,
[sign up here](#)
[Contact Us](#)
[Submit a Suggestion](#)